

NHSScotland Assure

Reinforced Autoclaved Aerated Concrete (RAAC) Survey Programme – October 2024

Welcome to the eighth update on the Reinforced Autoclaved Aerated Concrete (RAAC) Survey Programme.

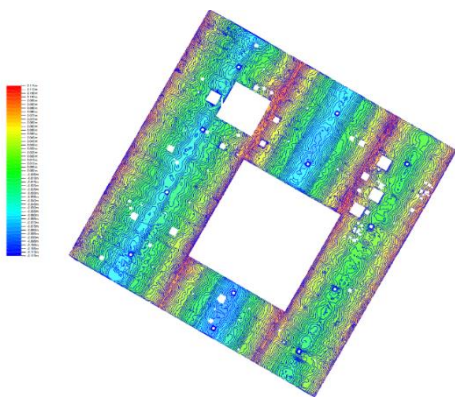
Survey Programme Update

As of 31st October, we have carried out surveys of 560 buildings across NHS Ayrshire & Arran, NHS Grampian, NHS Greater Glasgow & Clyde, NHS Highland, NHS Fife, NHS Borders, NHS Tayside, NHS Lothian, NHS Lanarkshire, NHS Forth Valley, NHS Dumfries & Galloway, NHS National Services Scotland, NHS 24 and Scottish Ambulance Service.

There are a small number of re-visits outstanding, to properties where there was limited access, which we aim to conclude as soon as possible.

Point Cloud Pilot Surveys

We have undertaken pilot surveys of three buildings across NHSScotland utilising point cloud technology. Heat maps have been produced as a result of these surveys which indicated areas to target for further investigation / more detailed surveys. Results were overlaid on floor plans to identify the locations where opening up works were required. The board then coordinated with the survey partners to create the openings to allow more detailed surveys to be carried out in key areas. All areas were inspected, and final reports are due to be issued imminently. The reports



will contain a condition RAG rating of panels and end bearings. For panels or end bearing requiring remedial action WSP will provide recommendations for remedial actions.

Annual Surveys Due

We have been instructed by Scottish Government to carry out return surveys on all properties requiring an annual survey. Currie & Brown will be in touch over the next few weeks to arrange

access. If you require clarification of which properties are on the list please get in touch.

Phase 2 Surveys

We have made proposals for a Phase 2 Survey Programme, managed centrally by NHSScotland Assure, which has been accepted and we will now proceed with the procurement for this programme, anticipated to commence early in FY 25/26 subject to funding being received. It is likely that the survey programme will include the following:

- Annual & triennial inspections
- Point Cloud Surveys including follow up detailed inspections where required
- Provision of remedial solutions where remedial action is required to secure panels
- Mechanism for board to call off for emergency site visits
- Board support for remedial actions and action plans
- Further training for boards where RAAC has been identified

Board Responsibilities

Whilst a Phase 2 programme is being procured it remains the boards responsibility to ensure any remedial actions are addressed in a timely manner. Mitigation measures have been provided to allow boards to bridge the gap between completion of the Discovery Survey and implementation of remedial actions but should not be seen as a long-term solution in place of the remedial actions. For boards who are in receipt of remedial designs for “red” risk assessed panels, you should be ensuring these are taken forward. Currie & Brown/WSP have offered support with conversations with contractors to apply the remedial solution if required however this offer of support is likely to cease at the end of October

Training

In person, on-site training for local estates teams has been delivered to all boards that have requested training. It is the intention that any further survey programme will offer one further training session for any board, where RAAC has been identified, that feels this would be beneficial.



RAAC Guidance

A RAAC Guidance document is currently being developed for boards. We will issue a further communication when it has been published and is available for use.



Publication of Survey Results

NHSScotland Assure have updated the list of survey results on the NSS website. **Please remember to update your survey results on your individual board websites.**

If you have any queries, please contact the team at:
NSS.RAAC@nhs.scot